

**Westmill Wind Farm
Performance Review**

Oct-12

Period 01/10/2012-31/10/2012					
Turbine	Days	Energy [kWh]	Turbine Manuf. Avail.		Energy Since Startup [kWh]
			Subtotal [%]	Total [%]	
T01	31	179,335	99.9	98.5	10,246,982
T02	31	180,503	100	97.6	9,959,536
T03	31	178,625	99.9	98.2	9,791,699
T04	31	177,885	100	98.4	9,574,897
T05	31	182,152	99.7	98.4	9,913,992
Totals					
Average	31	179,700	99.9	98.2	9,897,421
Sum		898,500			49,487,106

	October	Since Start Up
Production at SubStation		
Active Energy Import	5,952	317,688 kWh
Active Energy Export	863,938	
Budget	1,125,277	
Actual Export	859,350	
Variance to budget	76%	
Line Loss	4%	

Reactive Energy		
Reactive Energy Import	13,578	1,637,335 kVArh
Reactive Energy Export	13,105	1,332,357 kVArh

Reliability		
Manufactor Availability	99.9%	98.2 %
Capacity Factor	18.20%	18.2 %

Outage Time		
Total	10.1	5483.20 hours

Estimated figures until meter reading confirmed

Notes/Errors	
Tower vibration four times, once on T3 and three times on T5.	

Daily output Oct-12

Grid

Export Active Energy Period	Total [kWh]	Period	Total [kWh]	T01 [kWh]	T02 [kWh]	T03 [kWh]	T04 [kWh]	T05 [kWh]
31/10/2012	77,063	31/10/2012	78,869	16,512	16,042	16,198	15,452	14,665
30/10/2012	6,955	30/10/2012	7,577	1,526	1,502	1,487	1,516	1,546
29/10/2012	19,381	29/10/2012	20,315	3,992	4,019	4,161	4,074	4,069
28/10/2012	26,268	28/10/2012	27,450	5,465	5,532	5,535	5,453	5,465
27/10/2012	63,776	27/10/2012	65,325	12,732	13,030	13,462	13,290	12,811
26/10/2012	63,786	26/10/2012	65,358	13,276	13,912	12,853	12,549	12,768
25/10/2012	70,789	25/10/2012	72,527	15,133	14,412	13,216	14,659	15,107
24/10/2012	28,491	24/10/2012	29,779	6,371	5,948	5,600	5,875	5,985
23/10/2012	5,232	23/10/2012	6,198	1,265	1,246	1,243	1,214	1,230
22/10/2012	6,627	22/10/2012	7,937	1,715	1,568	1,364	1,604	1,686
21/10/2012	17,655	21/10/2012	18,629	3,944	3,798	3,415	3,566	3,906
20/10/2012	2,047	20/10/2012	2,494	440	542	516	481	515
19/10/2012	383	19/10/2012	497	84	105	99	99	110
18/10/2012	37,765	18/10/2012	39,216	8,311	8,346	7,946	7,519	7,094
17/10/2012	61,647	17/10/2012	63,319	13,143	13,001	12,729	12,455	11,991
16/10/2012	76,691	16/10/2012	78,627	15,184	15,762	15,880	15,847	15,954
15/10/2012	25,734	15/10/2012	26,935	5,447	5,627	5,554	5,237	5,070
14/10/2012	2,514	14/10/2012	2,953	794	603	561	486	509
13/10/2012	4,495	13/10/2012	5,068	1,211	972	914	926	1,045
12/10/2012	53,277	12/10/2012	54,855	10,605	10,862	10,969	11,094	11,325
11/10/2012	15,221	11/10/2012	16,281	3,024	2,857	2,919	2,809	4,672
10/10/2012	1,728	10/10/2012	2,243	325	330	321	348	919
09/10/2012	6,080	09/10/2012	7,180	1,303	1,250	1,228	1,467	1,932
08/10/2012	2,608	08/10/2012	3,695	599	578	444	442	1,632
07/10/2012	764	07/10/2012	1,128	165	152	83	51	677
06/10/2012	760	06/10/2012	1,134	299	254	243	170	168
05/10/2012	20,036	05/10/2012	20,969	4,076	4,202	4,170	4,124	4,397
04/10/2012	24,329	04/10/2012	25,573	5,173	5,183	5,134	5,035	5,048
03/10/2012	36,974	03/10/2012	38,320	7,509	7,618	7,831	7,655	7,707
02/10/2012	71,242	02/10/2012	73,012	12,886	14,069	15,598	15,440	15,019
01/10/2012	33,620	01/10/2012	35,037	6,826	7,181	6,952	6,948	7,130
Totals		Totals						
Average	27,869	Average	28,984	5,785	5,823	5,762	5,738	5,876
Sum	863,938	Sum	898,500	179,335	180,503	178,625	177,885	182,152
			100.00%	19.96%	20.09%	19.88%	19.80%	20.27%

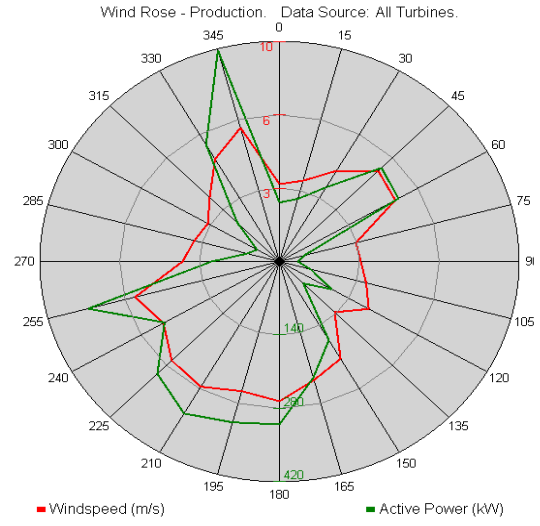
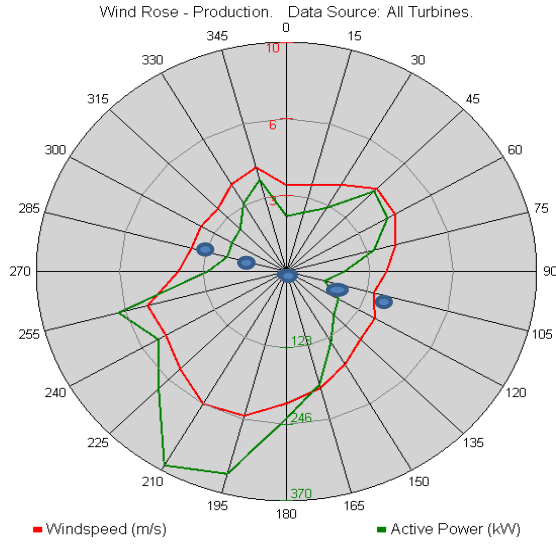
WESTMILL YEAR TO DATE PRODUCTION

2011/2012						
PRODUCTION PER TURBINE						
	T1	T2	T3	T4	T5	Total
Nov-11	177,807	177,227	172,650	168,303	175,050	871,037
Dec-11	371,618	351,435	348,855	350,787	346,352	1,769,047
Jan-12	279,376	263,552	261,452	261,011	269,598	1,334,989
Feb-12	153,333	142,251	151,287	151,937	154,897	753,705
Mar-12	102,044	98,362	96,588	95,910	100,818	493,722
Apr-12	212,066	212,053	208,402	202,491	190,150	1,025,162
May-12	135,082	133,082	131,352	130,739	132,879	663,134
Jun-12	228,593	238,738	226,747	225,386	238,239	1,157,703
Jul-12	120,237	121,088	121,268	121,901	120,807	605,301
Aug-12	122,273	122,573	120,986	122,157	124,874	612,863
Sep-12	157,668	156,959	154,792	156,870	158,928	785,217
Oct-12	179,335	180,503	178,625	177,885	182,152	898,500
Total	2,239,432	2,197,823	2,173,004	2,165,377	2,194,744	10,970,380
%	20.4%	20.0%	19.8%	19.7%	20.0%	100.0%

	YTD				Cumulative			Capacity	Availability	Wind Speed m/s	Historic data				
	2011/2012				2011/2012						Average	2010/2011	2009/2010	2008/2009	2007/2008
	Actual	Budget	Variance	Line Loss	Actual	Budget	Variance								
Nov-11	838,750	1,113,177	75.3%	4%	838,750	1,113,177	75%	18.2%	99.9%	5.14	1,383,231	1,040,420	1,938,119	1,171,155	
Dec-11	1,724,080	1,246,274	138.3%	3%	2,562,830	2,359,451	109%	35.8%	98.8%	5.17	807,147	498,995	1,010,235	912,210	
Jan-12	1,297,035	1,355,172	95.7%	3%	3,859,865	3,714,623	104%	27.0%	99.9%	5.22	955,558	1,041,950	683,190	1,141,535	
Feb-12	728,005	1,234,187	59.0%	3%	4,587,870	4,948,810	93%	16.3%	99.9%	5.21	764,723	1,161,200	622,215	510,755	
Mar-12	470,930	1,197,875	39.3%	5%	5,058,800	6,146,685	82%	10.0%	100.0%	5.20	1,015,055	589,550	915,735	1,032,800	
Apr-12	994,110	943,781	105.3%	3%	6,052,910	7,090,466	85%	21.4%	98.2%	5.18	668,290	634,940	637,085	483,385	
May-12	634,345	846,983	74.9%	4%	6,687,255	7,937,448	84%	13.4%	99.4%	5.20	867,634	1,202,020	380,665	1,202,895	
Jun-12	1,121,805	750,185	149.5%	3%	7,809,060	8,687,633	90%	24.2%	99.8%	5.20	535,393	795,565	268,615	348,430	
Jul-12	575,445	701,786	82.0%	5%	8,384,505	9,389,418	89%	12.2%	99.9%	5.20	697,500	460,895	619,750	967,500	
Aug-12	581,425	725,985	80.1%	5%	8,965,930	10,115,403	89%	12.4%	98.0%	5.14	737,319	513,435	671,210	761,260	
Sep-12	750,075	859,070	87.3%	4%	9,716,005	10,974,473	89%	16.4%	98.9%	5.06	810,881	1,079,775	694,335	777,250	
Oct-12	859,350	1,125,277	76.4%	4%	10,575,355	12,099,750	87%	18.2%	99.9%	5.08	953,263	1,231,920	853,350	567,510	
TOTAL	10,575,355	12,099,750		3.77%				18.8%	99.4%	5.17	10,195,993	10,250,665	9,294,504	9,876,685	

estimated figure

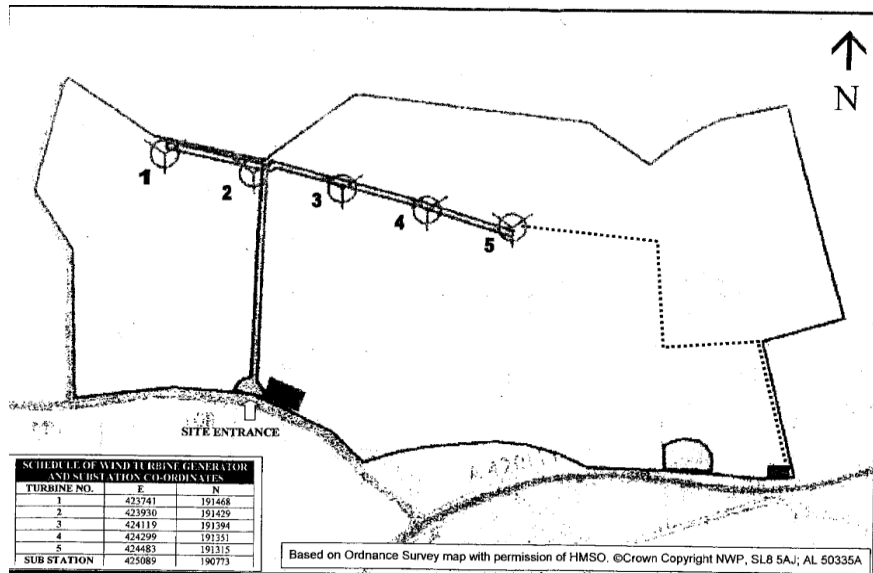
Wind Rose



YTD Wind Rose (from Nov 2011)

1st - 31st October 2012 Wind Rose

● Direction of Turbines



0

5