

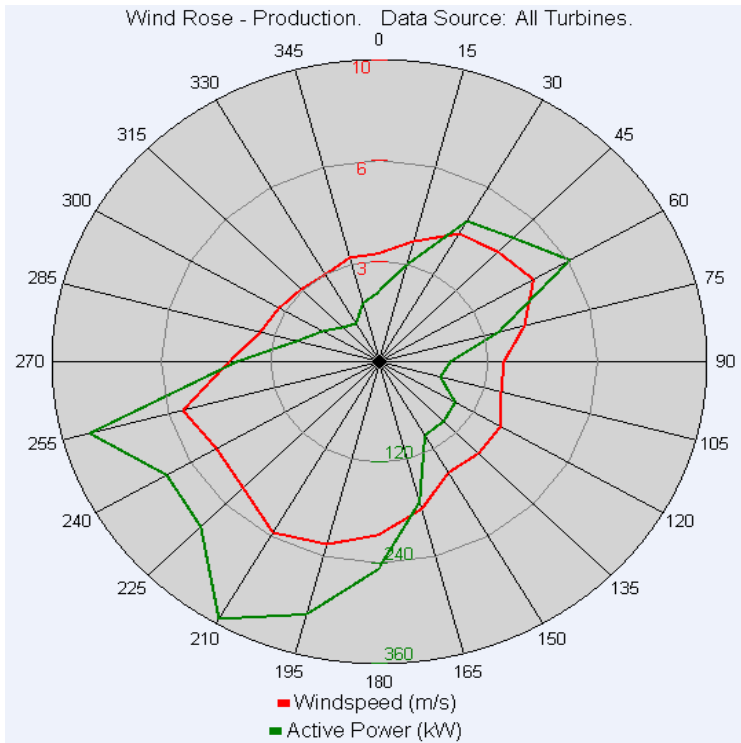
WESTMILL YEAR TO DATE PRODUCTION

2009						
PRODUCTION PER TURBINE						
	T1	T2	T3	T4	T5	Total
Nov-08	252,651	242,143	242,525	236,131	236,403	1,209,853
Dec-08	198,073	176,690	191,046	188,947	191,764	946,520
Jan-09	251,173	234,289	236,594	223,570	231,268	1,176,894
Feb-09	119,230	101,619	103,953	108,519	106,426	539,747
Mar-09	224,098	210,031	211,302	204,191	220,219	1,069,841
Apr-09	108,623	103,307	97,564	97,203	101,807	508,504
May-09	253,263	249,010	245,317	246,057	249,645	1,243,292
Jun-09	81,810	73,998	72,064	71,521	75,883	375,276
Jul-09	211,469	202,109	199,945	198,577	195,972	1,008,072
Aug-09	165,559	162,150	160,201	156,779	155,344	800,033
Sep-09	166,860	161,961	160,300	161,241	162,496	812,858
Oct-09	118,025	119,518	119,568	120,119	120,834	598,064
Total	2,150,834	2,036,825	2,040,379	2,012,855	2,048,061	10,288,954
%	20.9%	19.8%	19.8%	19.6%	19.9%	100.0%

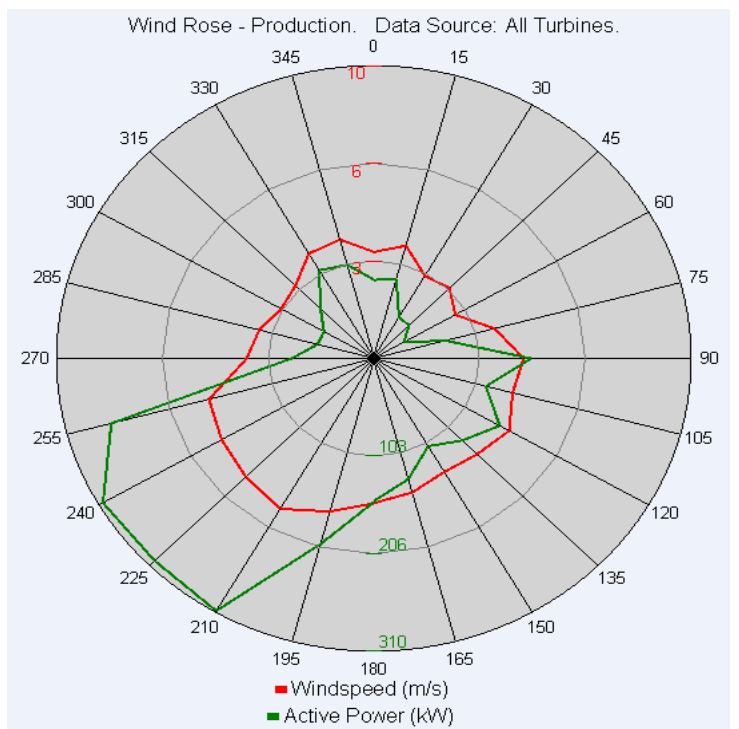
	YTD				Cumulative		
	2009				2009		
	Actual	Budget	Variance	Line Loss	Actual	Budget	Variance
Nov-08	1,171,155	1,113,177	5%	3%	1,171,155	1,113,177	5%
Dec-08	912,210	1,246,274	-27%	4%	2,083,365	2,359,451	-12%
Jan-09	1,141,535	1,355,172	-16%	3%	3,224,900	3,714,623	-13%
Feb-09	510,755	1,234,187	-59%	5%	3,735,655	4,948,810	-25%
Mar-09	1,032,800	1,197,875	-14%	3%	4,768,455	6,146,685	-22%
Apr-09	483,385	943,781	-49%	5%	5,251,840	7,090,466	-26%
May-09	1,202,895	846,983	42%	3%	6,454,735	7,937,448	-19%
Jun-09	348,430	750,185	-54%	7%	6,803,165	8,687,633	-22%
Jul-09	967,500	701,786	38%	4%	7,770,665	9,389,418	-17%
Aug-09	761,260	725,985	5%	5%	8,531,925	10,115,403	-16%
Sep-09	777,250	859,070	-10%	4%	9,309,175	10,974,473	-15%
Oct-09	567,510	1,125,277	-50%	5%	9,876,685	12,099,750	-18.37%
TOTAL	9,876,685	12,099,750		4.29%			

estimated figure

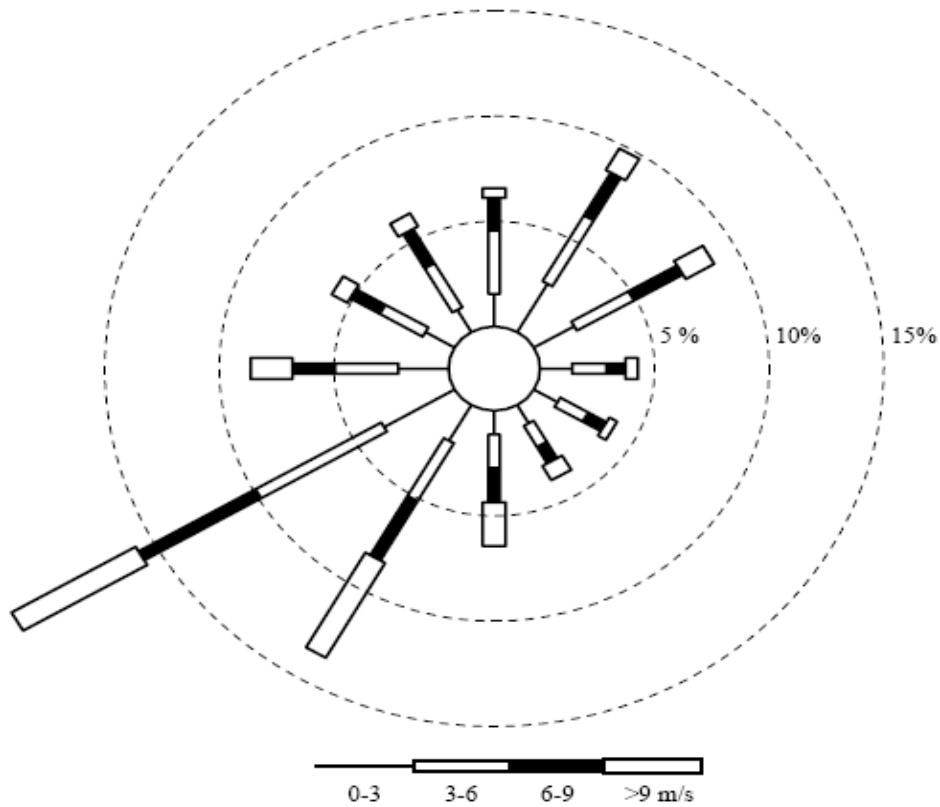
Wind Rose



YTD Wind Rose (from Jan 09)



1 - 31st October 2009 Wind Rose



Predicted wind rose per Garrad Hassan Report ~ 30m height