

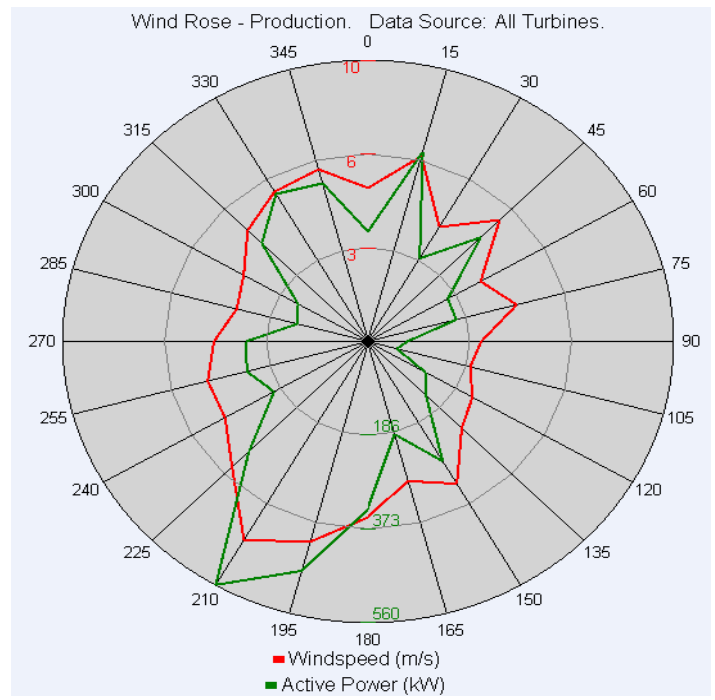
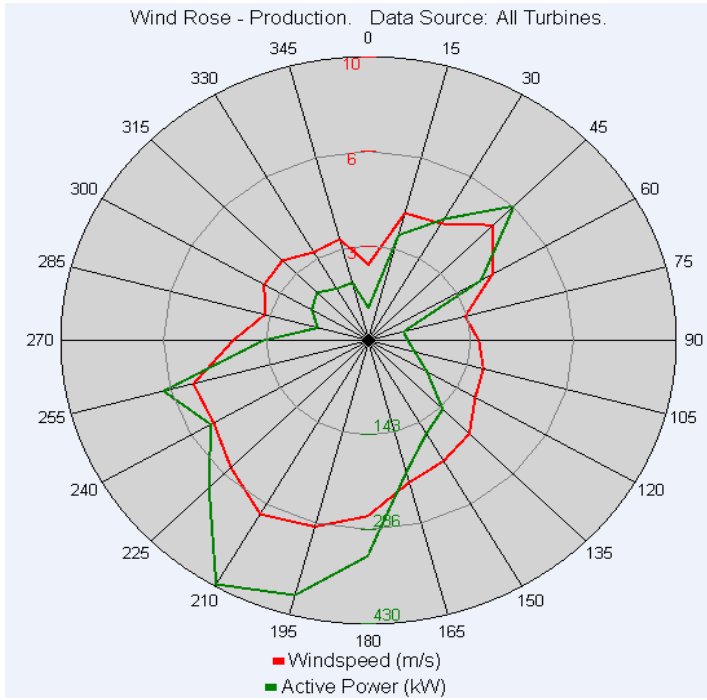
WESTMILL YEAR TO DATE PRODUCTION

2008						
PRODUCTION PER TURBINE						
	T1	T2	T3	T4	T5	Total
Jan-08						0
Feb-08	scada commenced 17 March 2008					0
Mar-08	127,656	131,253	140,252	118,523	130,452	648,136
Apr-08	206,131	193,997	189,193	169,094	200,405	958,820
May-08	148,172	146,479	136,672	135,909	148,683	715,915
Jun-08	154,509	153,132	153,575	151,030	151,726	763,972
Jul-08	164,937	158,835	152,913	150,304	153,424	780,413
Aug-08	213,800	214,351	211,075	206,258	199,988	1,045,472
Sep-08	156,021	151,453	152,668	146,532	146,628	753,302
Oct-08	256,929	225,861	241,878	235,883	237,124	1,197,675
Nov-08						0
Dec-08						0
Total	1,428,155	1,375,361	1,378,226	1,313,533	1,368,430	6,863,705
%	20.8%	20.0%	20.1%	19.1%	19.9%	100.0%

	YTD			Cumulative		
	2008			2008		
	Actual	Budget	Variance	Actual	Budget	Variance
Jan	0	0	0%	0	0	0%
Feb	160,710	160,710	0%	160,710	160,710	0%
Mar	1,522,135	1,222,075	25%	1,682,845	1,382,785	22%
Apr	917,750	774,384	19%	2,600,595	2,157,169	21%
May	684,955	798,584	-14%	3,285,550	2,955,752	11%
Jun	728,960	677,586	8%	4,014,510	3,633,338	10%
Jul	741,855	689,686	8%	4,756,365	4,323,024	10%
Aug	1,003,370	846,983	18%	5,759,735	5,170,007	11%
Sep	692,165	1,004,279	-31%	6,451,900	6,174,286	4%
Oct	1,160,270	1,234,175	-6%	7,612,170	7,408,460	3%
Nov						
Dec						
TOTAL	7,612,170	7,408,460				

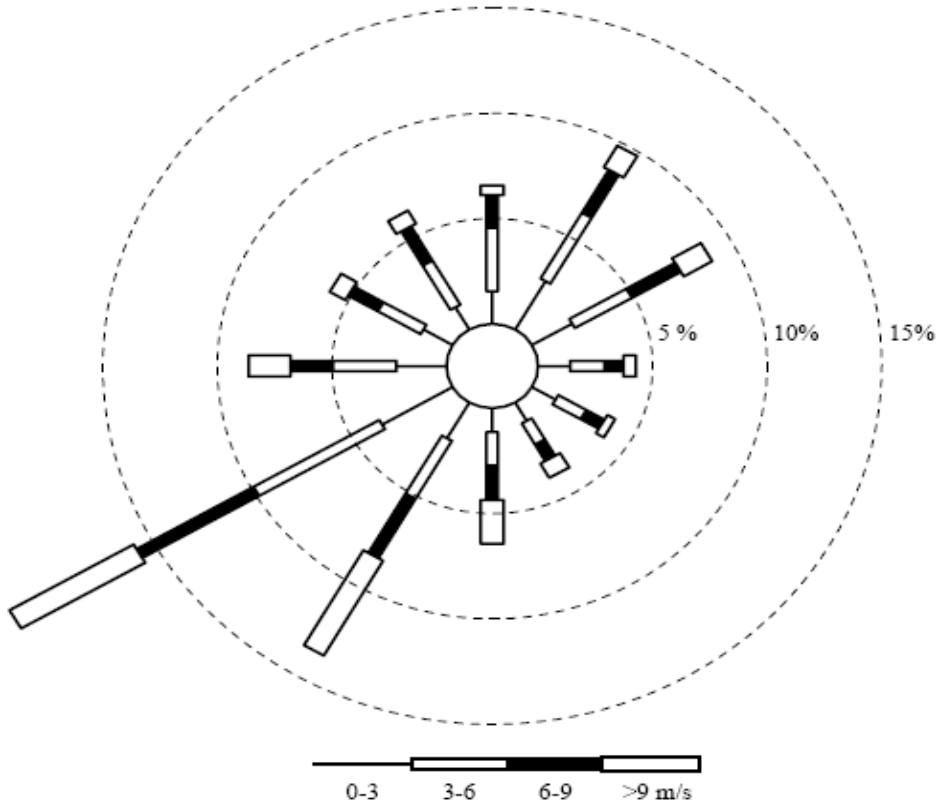
estimated figure

Wind Rose



YTD Wind Rose

1 - 31st October 2008 Wind Rose



Predicted wind rose per Garrad Hassan Report ~ 30m height