

**Westmill Wind Farm  
Performance Review**

**October 2010**

Period 01/10/2010-31/10/2010						
Turbine	Days	Energy [kWh]	Turbine Manuf. Avail. Subtotal [%]	Total [%]	Energy Since Startup [kWh]	
T01	31	183,385	99.9	97.6	5,831,157	
T02	31	182,362	99.9	96.4	5,617,916	
T03	31	176,009	99.8	97.4	5,498,543	
T04	31	171,396	98	97.7	5,316,502	
T05	31	176,063	99.3	98.1	5,618,025	
<b>Totals</b>						
<b>Average</b>	31	177,843	99.4	97.4	5,576,429	
<b>Sum</b>		889,215				

	Oct	Since Start Up
<b>Production at SubStation</b>		
Active Energy Import	3,152	169,557 kWh
Active Energy Export	<b>850,690</b>	
Budget	<b>1,125,277</b>	
Actual Export	<b>853,350</b>	
Variance to budget	<b>-24%</b>	
Line Loss	<b>4%</b>	

<b>Reactive Energy</b>		
Reactive Energy Import	10,725	1,296,718 kVArh
Reactive Energy Export	15,386	1,009,706 kVArh

<b>Reliability</b>		
Manufactor Availability	99.4%	97.4 %
Capacity Factor	<b>18.00%</b>	17.9 %

<b>Outage Time</b>		
Total	48.4	6,590.30 hours

**Estimated figures until meter reading confirmed**

<b>Notes/Errors</b>	
Tower vibration once on T3 for 30 mins on 23 Oct.	
Low oil pressure & gear oil error on T4. Down 15h 32m on 17/18 Oct	
Hydraulic oil pressure on T5 for 3 hours on 30 Oct.	

## Daily output October 2010

Grid

Export Active Energy	Total		Total	T01	T02	T03	T04	T05
Period	[kWh]	Period	[kWh]	[kWh]	[kWh]	[kWh]	[kWh]	[kWh]
31/10/2010	9,012	31/10/2010	10,312	2,048	1,979	1,846	1,810	2,629
30/10/2010	20,795	30/10/2010	22,047	4,714	4,644	4,379	4,230	4,080
29/10/2010	81,927	29/10/2010	83,840	17,779	17,388	16,919	16,140	15,614
28/10/2010	67,974	28/10/2010	69,701	13,958	14,289	14,005	13,956	13,493
27/10/2010	54,786	27/10/2010	56,387	11,176	11,551	11,394	11,121	11,145
26/10/2010	77,427	26/10/2010	79,246	16,120	16,440	15,855	15,573	15,258
25/10/2010	4,069	25/10/2010	4,487	881	1,016	966	855	769
24/10/2010	8,653	24/10/2010	9,905	1,996	2,084	2,070	1,888	1,867
23/10/2010	22,561	23/10/2010	23,589	5,359	4,590	4,616	4,520	4,504
22/10/2010	25,552	22/10/2010	26,816	5,315	5,583	5,341	5,323	5,254
21/10/2010	26,271	21/10/2010	27,471	5,527	5,570	5,489	5,613	5,272
20/10/2010	13,291	20/10/2010	14,206	2,929	2,787	2,767	2,793	2,930
19/10/2010	20,835	19/10/2010	22,009	5,445	3,995	4,068	4,153	4,348
18/10/2010	20,537	18/10/2010	21,855	4,828	4,660	4,354	3,425	4,588
17/10/2010	1,384	17/10/2010	1,707	416	451	381	91	368
16/10/2010	18,616	16/10/2010	19,885	3,861	4,081	4,086	4,104	3,753
15/10/2010	6,310	15/10/2010	7,375	1,591	1,461	1,448	1,430	1,445
14/10/2010	2,236	14/10/2010	3,153	648	647	645	637	576
13/10/2010	4,814	13/10/2010	6,020	1,266	1,223	1,210	1,154	1,167
12/10/2010	14,902	12/10/2010	16,216	3,438	3,439	3,202	3,049	3,088
11/10/2010	56,049	11/10/2010	57,656	11,758	12,271	11,660	10,758	11,209
10/10/2010	43,143	10/10/2010	44,597	9,331	9,085	8,170	8,828	9,183
09/10/2010	37,879	09/10/2010	39,240	7,965	7,727	7,471	7,878	8,199
08/10/2010	22,031	08/10/2010	23,292	4,567	4,539	4,153	4,014	6,019
07/10/2010	13,865	07/10/2010	15,035	2,935	2,934	2,625	2,473	4,068
06/10/2010	25,885	06/10/2010	27,262	5,314	5,567	5,464	5,389	5,528
05/10/2010	27,516	05/10/2010	28,872	5,812	6,069	5,929	5,651	5,411
04/10/2010	9,059	04/10/2010	9,542	1,931	1,951	1,914	1,927	1,819
03/10/2010	52,743	03/10/2010	54,180	11,184	11,121	10,804	10,613	10,458
02/10/2010	7,833	02/10/2010	8,953	1,667	1,866	1,832	1,820	1,768
01/10/2010	52,735	01/10/2010	54,359	11,626	11,354	10,946	10,180	10,253
<b>Totals</b>		<b>Totals</b>						
Average	27,442	<b>Average</b>	28,684	5,916	5,883	5,678	5,529	5,679
Sum	850,690	<b>Sum</b>	889,215	183,385	182,362	176,009	171,396	176,063
			100.0%	20.6%	20.5%	19.8%	19.3%	19.8%

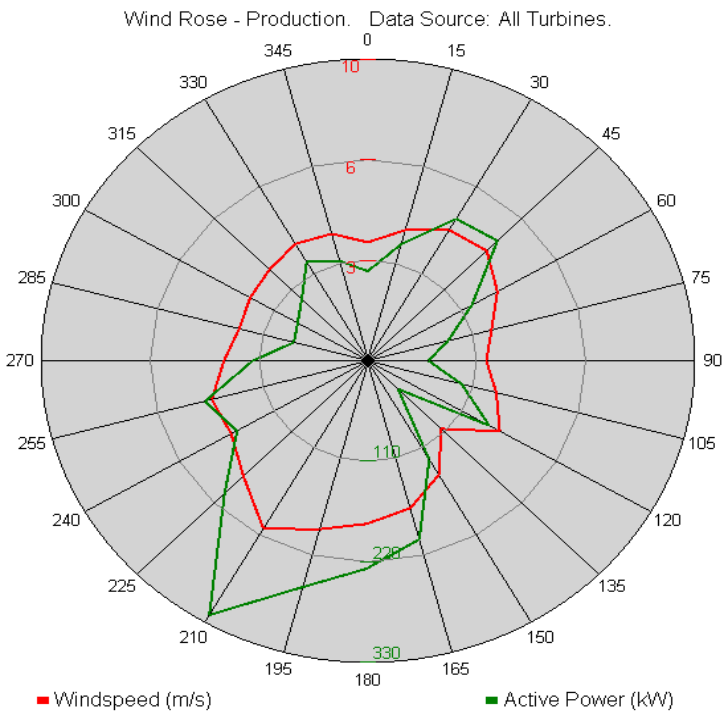
## WESTMILL YEAR TO DATE PRODUCTION

2009/2010						
PRODUCTION PER TURBINE						
	T1	T2	T3	T4	T5	Total
Nov-09	403,667	400,977	402,959	384,453	395,460	1,987,516
Dec-09	221,673	206,096	215,848	206,667	197,014	1,047,298
Jan-10	152,817	145,568	139,318	138,237	140,178	716,118
Feb-10	145,186	131,781	123,365	119,289	133,423	653,044
Mar-10	198,713	190,053	182,268	191,890	191,271	954,195
Apr-10	138,237	134,918	130,899	123,765	131,205	659,024
May-10	81,954	78,920	87,635	76,288	76,049	400,846
Jun-10	58,540	57,829	57,443	52,581	56,967	283,360
Jul-10	137,378	131,443	134,169	125,559	122,582	651,131
Aug-10	151,329	137,275	140,420	134,703	139,452	703,179
Sep-10	143,812	145,700	143,105	140,859	152,547	726,023
Oct-10	183,385	182,362	176,009	171,396	176,063	889,215
<b>Total</b>	<b>2,016,691</b>	<b>1,942,922</b>	<b>1,933,438</b>	<b>1,865,687</b>	<b>1,912,211</b>	<b>9,670,949</b>
%	20.9%	20.1%	20.0%	19.3%	19.8%	100.0%

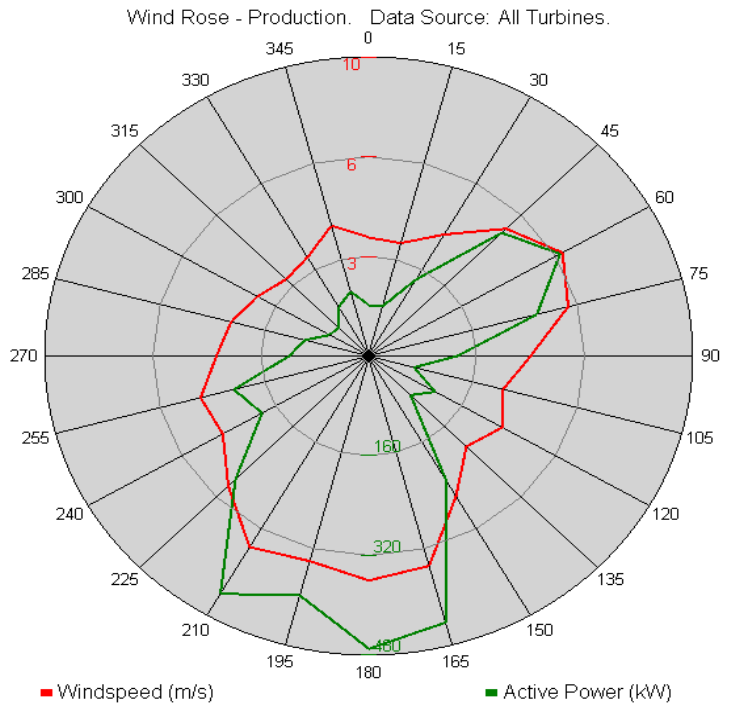
	YTD				Cumulative			Capacity	Availability
	2009/2010				2009/2010			2009/2010	
	Actual	Budget	Variance	Line Loss	Actual	Budget	Variance		
Nov-09	1,938,119	1,113,177	74%	2%	1,938,119	1,113,177	74%	41.5%	98.1%
Dec-09	1,010,235	1,246,274	-19%	4%	2,948,354	2,359,451	25%	21.2%	97.4%
Jan-10	683,190	1,355,172	-49.6%	5%	3,631,544	3,714,623	-2.2%	14.5%	96.2%
Feb-10	622,215	1,234,187	-49.6%	5%	4,253,759	4,948,810	-14.0%	14.6%	96.4%
Mar-10	915,735	1,197,875	-23.6%	4%	5,169,494	6,146,685	-15.9%	19.3%	96.0%
Apr-10	637,085	943,781	-32.5%	3%	5,806,579	7,090,466	-18.1%	13.8%	95.4%
May-10	380,665	846,983	-55.1%	5%	6,187,244	7,937,448	-22.0%	8.1%	97.8%
Jun-10	268,615	750,185	-64.2%	5%	6,455,859	8,687,633	-25.7%	5.9%	98.2%
Jul-10	619,750	701,786	-11.7%	5%	7,075,609	9,389,418	-24.6%	13.2%	98.6%
Aug-10	671,210	725,985	-7.5%	5%	7,746,819	10,115,403	-23.4%	14.2%	99.8%
Sep-10	694,335	859,070	-19.2%	4%	8,441,154	10,974,473	-23.1%	15.2%	99.3%
Oct-10	853,350	1,125,277	-24.2%	4%	9,294,504	12,099,750	-23.2%	18.0%	97.4%
<b>TOTAL</b>	<b>9,294,504</b>	<b>12,099,750</b>		<b>4.23%</b>				<b>16.6%</b>	<b>97.6%</b>

estimated figure

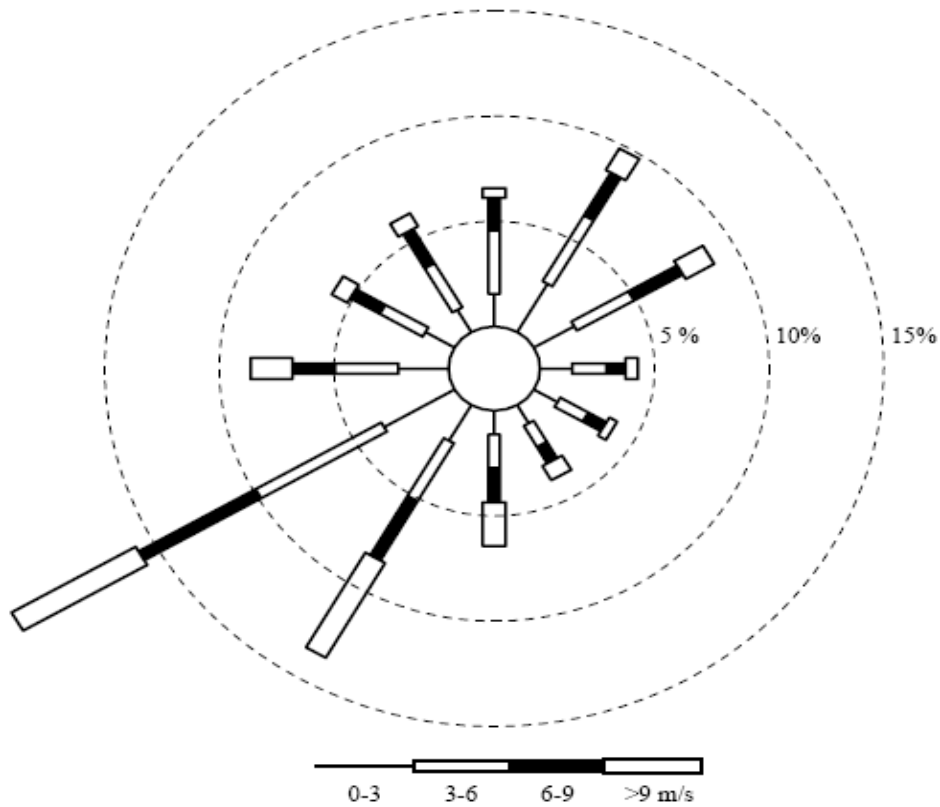
# Wind Rose



YTD Wind Rose (from Nov 2009)



1 - 31st October 2010 Wind Rose



Predicted wind rose per Garrad Hassan Report ~ 30m height